

DEKRA Rail brochure Corrosion and Coatings



Keeping the elements at bay

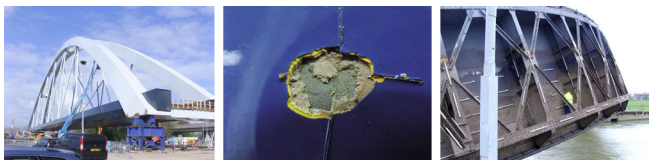
Challenges in withstanding the effects of weather, pollution and graffiti

Over their lifetime, rolling stock and infrastructure are expected to deliver a reliable performance. That means they have to be robust and able to withstand all weather conditions. DEKRA Rail has the expertise to support you in choosing the right options to successfully combat the effects of corrosion on your systems.

- > You want to maximize the lifespan of your systems.
- > You therefore want to select the right coating for the metal structural components.
- > You want to optimise your maintenance procedures, not only for daily maintenance, by using cleaning products that don't damage structures and coatings, but also when repairing protective coatings.

We can help!

- > We can analyze the damage and advise you on the measures that need to be taken.
- > We can help you choose the right materials for protective coating and cleaning.
- > We can advise you on how to optimize your maintenance processes and how to best implement these in your organization.
- > We can also help you set up standards and specifications for corrosion resistance and the maintenance of coating systems.



DEKRA Rail can fall back on

- > Extensive experience in the field of corrosion treatment and cleanability of steel and aluminum rolling stock and infrastructure components (e.g. wagon bodies, wheel axles, bridges, enclosures/casings, station furniture, catenary masts, interior components).
- > Well-qualified Coating and Corrosion Inspectors, NACE-certified.
- > A historic database with information about coating systems used.
- > Equipment for on-site testing of paint systems; e.g. thickness, coating structure, composition, adhesion.
- > Laboratories for investigating and testing paint systems and measures: apparatus for corrosion testing (salt, water vapor and sunlight), equipment for gloss, color and hardness readings.

Effective protection of rolling stock and infrastructure from external influences

Contact:
DEKRA Rail

Postal address PO Box 8125
3503 RC Utrecht
The Netherlands

Business address Concordiastraat 67
3551 EM Utrecht
The Netherlands

Telephone +31 30 3005 100
Web www.dekra-rail.com
E-mail rail.nl@dekra.com